



**NEW: Pall PCC37-XS
Component Cleanliness Cabinet**
For the determination of component cleanliness

The Pall PCC37-XS Cleanliness Cabinet facilitates the accurate, reliable and repeatable preparation of gravimetric membranes for the determination of component cleanliness. The PCC37-XS enables operators to access the cleanliness level of the manufactured parts and components in accordance to ISO18413, ISO16232 and VDA 19 procedures.

Features

- Stainless Steel and Carbon Steel Construction
- Reliable and repeatable measurements
- HEPA filtered laminar air flow in a self contained super polished stainless steel working area
- Simple to install and operate
- Fully portable requiring only a power source
- Designed and built to ISO Pressure Washing standard 16232
- Solvent dispensing gun with fluid volume dispensing counter
- Pressurized solvent dispensing and recycling circuits
- Gravimetric membrane holder
- Auto Wall Wash function
- PLC controlled operating parameters (option)

General Specifications

- Dimensions: 1200mm W x 1000mm D x 2300mm H
- Inputs: 220V/200V 50 or 60 Hz
- Working area: 696mm W x 800mm Diameter X800mm H
- Fluorocarbon seals, BA grade SUS materials are standard
- Air flow ISO14644-123 Class 5
- Polished stainless steel extraction enclosure
- Controlled cleanliness environment (Class 5 per ISO 14644-1)
- HEPA filter rating: 0.3 µm absolute
- Control panel with colored touch screen
- Solvent filter rating: 0.2 µm absolute
- Test membrane holder in the power zone
- Noise level in working conditions: < 74 dB

Materials of Construction:

Electrochemical Polished for both Stainless Steel Working Area and inside tube



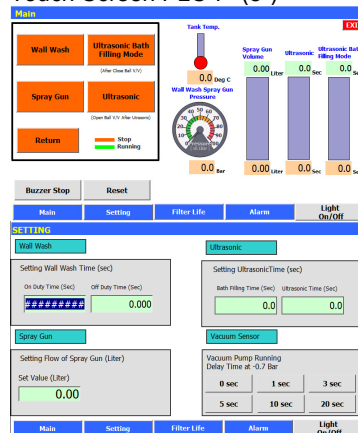
PCC37-XS, Pall Cleanliness Cabinet



Ultrasonic Operation in Bath

Auto Wall Wash

Touch Screen PLC 7" (8")



Design it
Build it
Keep it **CLEAN**

Technical Specification Information

- Power Inputs: 220V 50 or 60 Hz, 1 or 3 Phase
- Power Consumption: 1.5 kW (~6A)
- Reservoir (solvent): 30 L (with fluid level Indicator)
- Spray Rinsing flow rate: 2.5 L/min (adjustable)
- Wall Wash flow rate: ~12 L/min (adjustable)
- Spray Rinse pressure: ~5 bar (adjustable)
- Wall Wash filter rating: 0.2 µm +1µm
2 stages absolute
- Dry weight: Approx. 500kg
- Membrane Holder: 2 stages Cascade, 47mm Dia.
3 stages Cascade (option)
- Chemical Compatibility: Synthetic Hydrocarbon Washing Fluids
- Vacuum Pump: -0.6 ~ -0.8 bar.
- Ultrasonic bath: 40 kHz – 200W max. (option)
- Effective efficiency: 20 W/L (option)

Ordering information

Component Cleanliness Cabinet

PCC37-XS 1 2 3 4 5

Table 1: Option

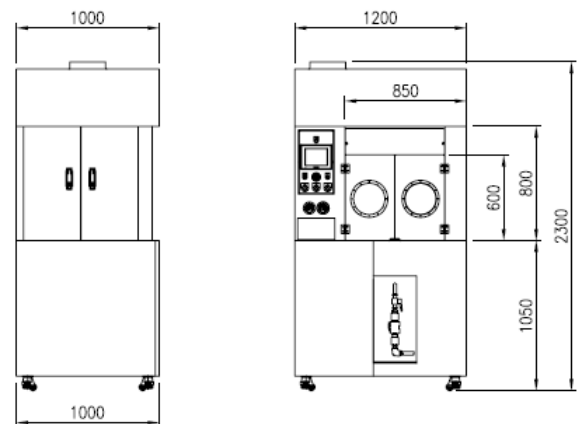
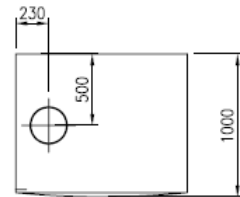
Code	Description
Omit	Standard
T5	Touch Screen PLC-5" size
T7	Touch Screen PLC-7" size

Table 2: Option

Code	Description
S	Shower Nozzle Line
P	Air purge and Shower Nozzle Line

Table 3: Option

Code	Description
US	Ultrasonic Bath
Omit	Pressure Rinse Type



[General PCC37-XS Drawing]

Table 4: Option

Code	Description
2	2Stages Cascade Membrane Holder
3	3Stages Cascade Membrane Holder
4	4Stages Cascade Membrane Holder

Table 5: Option

Code	Description
R	220V AC 60Hz 1Phase
W	220V AC 50Hz 1Phase
X	220V AC 50Hz 3Phase
Y	380V AC 50Hz 3Phase
Z	415V AC 50Hz 3Phase



Pall Machinery and Equipment

25 Harbor Park Drive
Port Washington, NY 11050
+1 516 484 3600 telephone
+1 800 289 7255 toll free US

Pall Korea Limited

968-5, 4F, Ildong Building, Daechi-Dong
Gangnam-Gu, Seoul, Korea, Pall Korea Limited
+82-2-560-7826, +82-2-560-8791
+82-2-569-9092 fax



Visit us on the Web at www.pall.com

Pall Corporation has offices and plants throughout the world. For Pall representatives in your area, please go to www.pall.com/contact

Because of technological developments related to the products, systems, and/or services described here in, the data and procedures are subject to change without notice. Please consult your Pall representative or visit www.pall.com to verify that this information remains valid.

Pall Corporation has offices and plants throughout the world.
© Copyright 2007, Pall Corporation. Pall, and are trademarks of Pall Corporation. ® Indicates a Pall trademark registered in the USA.
Filtration. Separation. Solution.sm is a service mark of Pall Corporation.

© Copyright 2012, Pall Corporation. Pall and are trademarks of Pall Corporation.
® indicates a trademark registered in the USA. ENABLING A GREENER FUTURE and *Filtration. Separation. Solution.sm* are service marks of Pall Corporation.